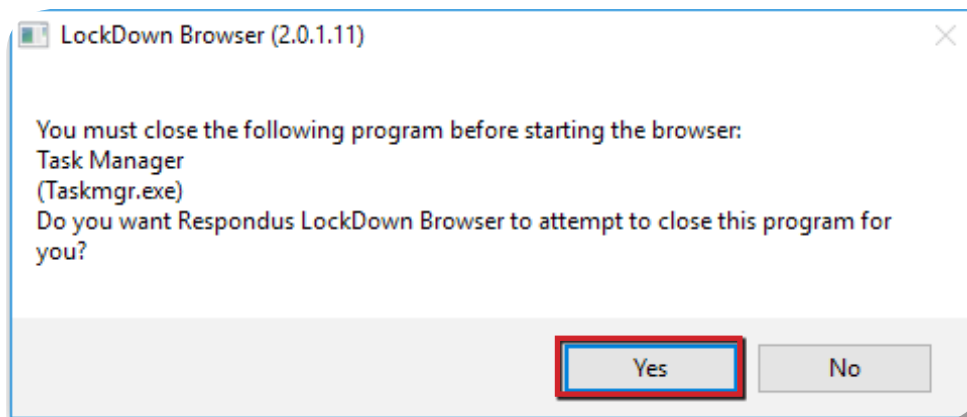


How to take a quiz with Respondus Lockdown Browser and Monitor

From a student's perspective, this is how LockDown Browser is used to take an assessment.

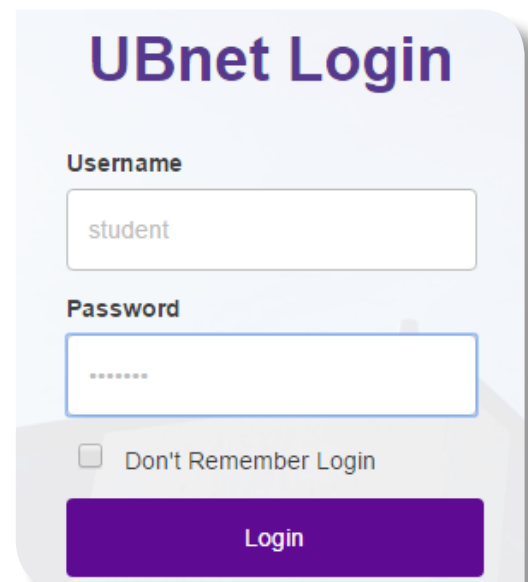


1. Locate the "LockDown Browser" shortcut on the desktop and double-click it. (For Mac users, launch "LockDown Browser" from the Applications folder.)



2. If prompted to close a blocked program (e.g. screen capture, instant messaging) choose **Yes** when prompted.

3. Login to your Canvas course using a student login.



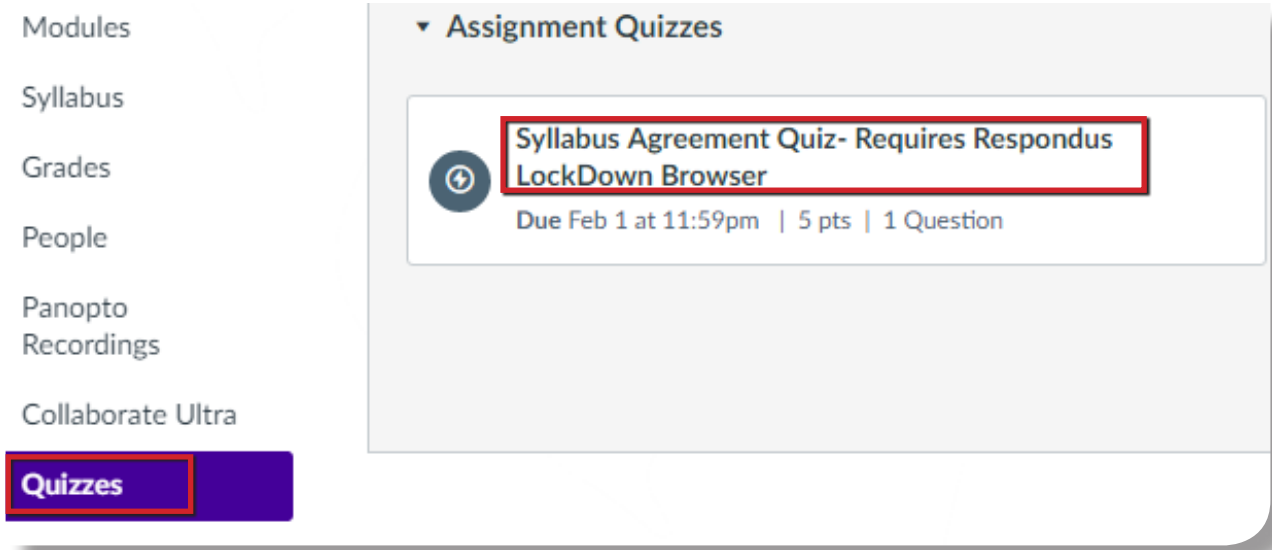
UBnet Login

Username

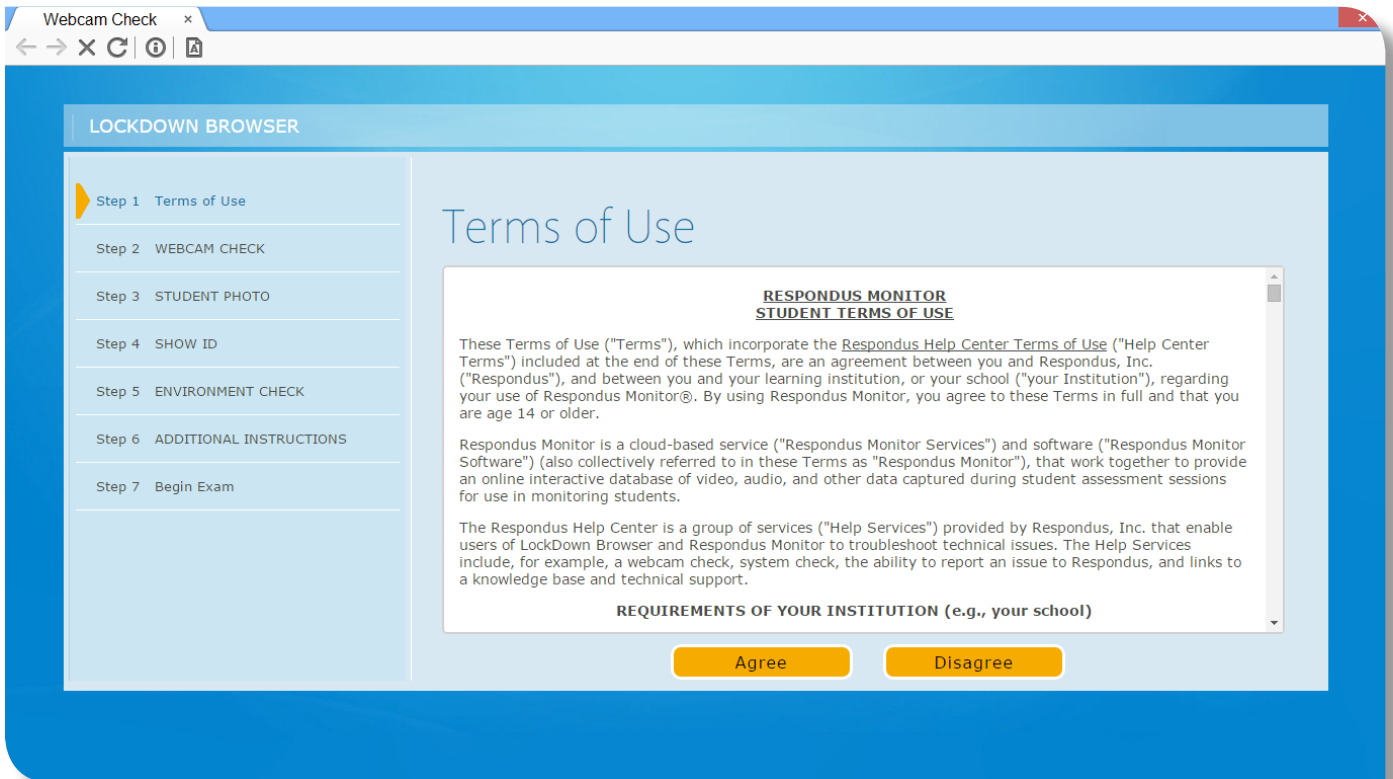
Password

Don't Remember Login

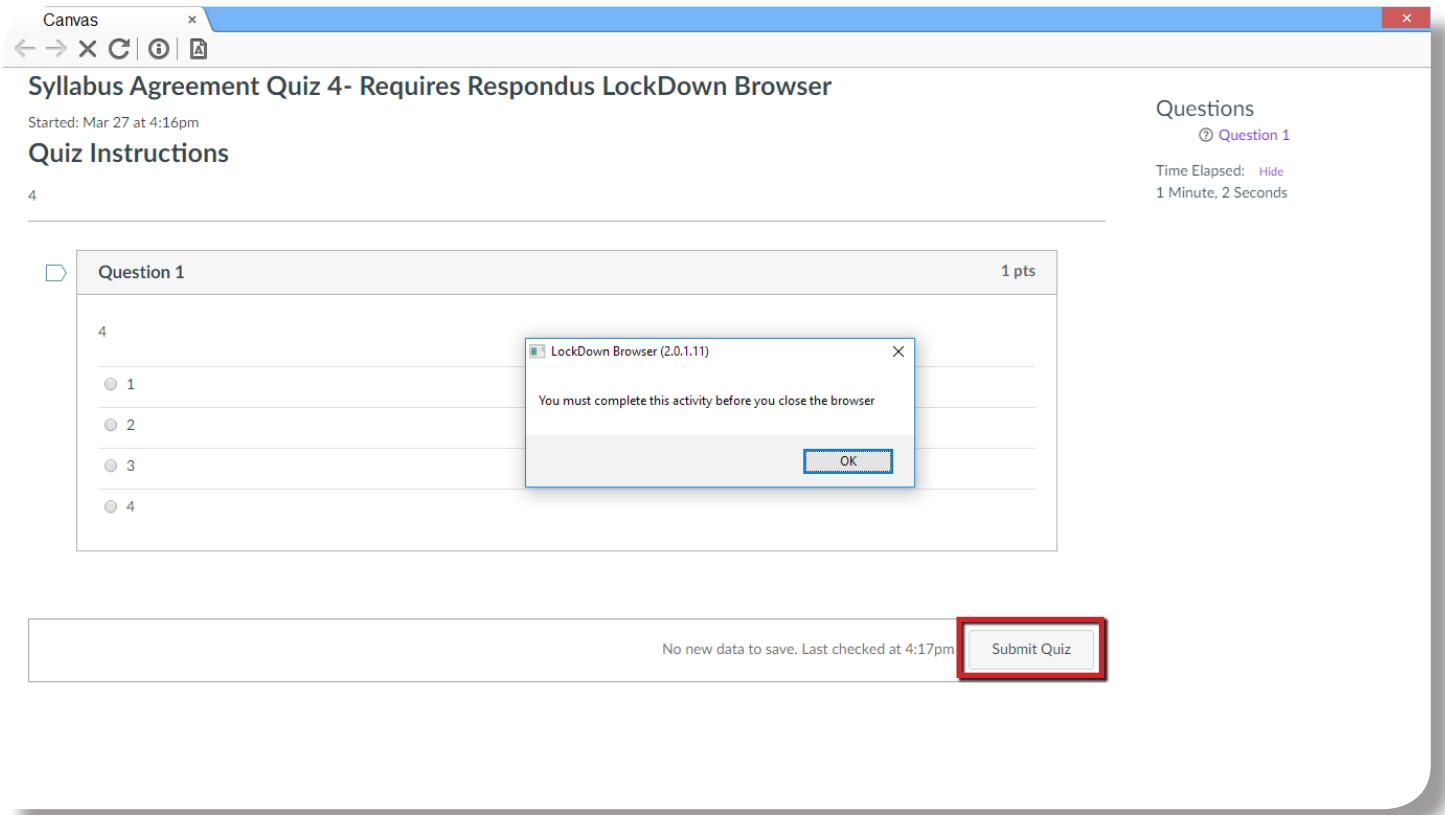
Login



4. Navigate to the quiz and click Take the Quiz.



5. If the student is required to use a webcam to record themselves during the test, a Startup Sequence will guide the student through a webcam check and other items required by the instructor.



Canvas x

Syllabus Agreement Quiz 4- Requires Respondus LockDown Browser

Started: Mar 27 at 4:16pm

Quiz Instructions

4

Question 1 1 pts

4

1

2

3

4

LockDown Browser (2.0.1.11)

You must complete this activity before you close the browser

OK

No new data to save. Last checked at 4:17pm

Submit Quiz

6. Once a quiz has been started with LockDown Browser, you cannot exit until the **Submit Quiz** button is clicked.

TIP: Prior to the first quiz, have students complete a practice quiz that uses LockDown Browser to make sure they have installed it correctly.

What if a standard browser is used?

If the settings for a quiz require that LockDown Browser be used, it cannot be accessed with a standard browser. In fact, you can easily confirm that a quiz has been properly set for LockDown Browser by attempting to open the quiz with a regular browser.

As shown at the top of the next column, a warning message will indicate that LockDown Browser is required for the quiz.

